A large crowd of people in formal attire is gathered outdoors under a large, leafy tree. The sun is shining through the branches, creating a bright, dappled light effect. In the background, a white tent is set up, and a large, multi-story building with many windows is visible. The scene is festive and social.

# THE HONOURABLE SOCIETY OF THE INNER TEMPLE

*Summer Parties*  
2026

# A unique summer setting...

Set within one of London's most historic estates, The Inner Temple offers a distinctive setting for summer events in the heart of the City. Tucked away from the busy streets yet moments from the Thames, it provides a rare sense of privacy and tranquillity in Central London.

At its centre lies the award-winning, three-acre Inner Temple Garden, a beautifully landscaped space that forms an elegant backdrop for summer celebrations. From relaxed drinks receptions to large-scale family fun days, our outdoor spaces are designed to support a wide range of events.

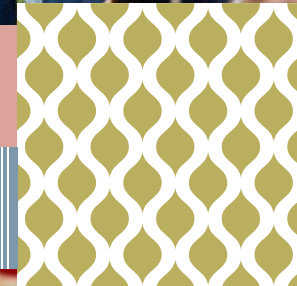
With four distinct outdoor event spaces, including a marquee accommodating up to 600 guests, The Inner Temple offers flexibility alongside heritage, allowing you to choose the setting that best suits your summer occasion.



“Our summer party in the gardens at The Inner Temple was fabulous, as it has been for a number of years. The gardens are maintained impeccably, and the marquee is of a high quality.

The events and catering team are incredibly helpful, creative and professional – all in all, lovely to work with.”

PRIVATE CLIENT



# Pavilion

AT THE INNER TEMPLE



Available from Tuesday 16 June to Thursday 9 July 2026, Pavilion at The Inner Temple is the new brand identity for our much-loved summer marquee, set within the Inner Temple Garden.

Reimagined with a garden-chic aesthetic, Pavilion offers a refined and flexible setting for summer receptions, parties and large-scale gatherings. Enhanced interiors and updated decorative details create an elegant backdrop for both daytime and evening celebrations.

For the first time, a limited number of events can begin from 4.00pm, allowing guests to make the most of long summer days and early evening occasions.

## GENERAL PAVILION HIRE TIMES

Monday to Friday, 6.00pm to 10.30pm

Saturday and Sunday, between 11.00am and 9.00pm

## CAPACITY

Standing: 600 – Seated: 150

## ALL PAVILION EVENTS INCLUDE

- Ambient lighting and PA system
- An integrated feature bar
- Lounge and garden furniture
- Plush restrooms with baby changing facilities
- Full accessibility, including an accessible restroom
- Staffed cloakroom
- Outdoor table tennis
- Garden games selection

Together, these inclusions ensure a smooth, well-supported and memorable summer event.



# Reception packages

## CANAPÉS - FROM £167\*

Package includes:

- Exclusive use of Pavilion from 6.00pm – 10.30pm
- Arrival Pimm's or house Prosecco reception (1 hour)
- Three canapés and three bowls
- Unlimited drinks package (3 hours)

## BOWLS - FROM £160\*

Package includes:

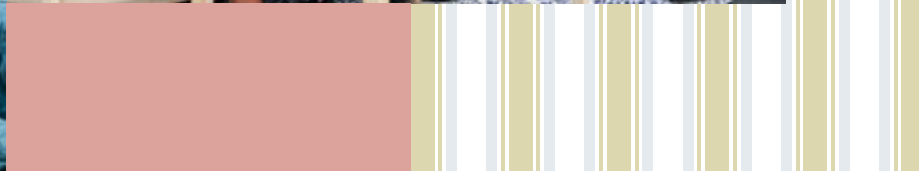
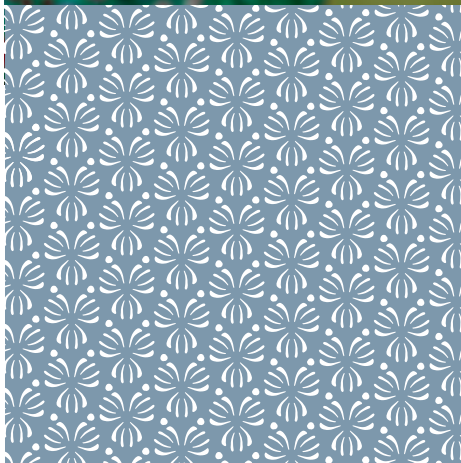
- Exclusive use of Pavilion from 6.00pm – 10.30pm
- Arrival Pimm's or house Prosecco reception (1 hour)
- Four bowls
- Unlimited drinks package (3 hours)

## FOOD STALL UPGRADE - FROM £2,200\*\*

Add an interactive element to your reception with themed food stalls, served alongside your canapé and bowls menus. Designed to create moments of theatre, they encourage guest engagement and add variety.

\*PACKAGE PRICES ARE BASED ON 300 GUESTS, AND ARE PER PERSON EXCLUDING VAT. MINIMUM NUMBERS APPLY.

\*\*BASED ON A TACO STALL PACKAGE FOR 100 GUESTS. PRICING VARIES BY MENU SELECTION AND GUEST NUMBERS AND EXCLUDES VAT. TERMS & CONDITIONS APPLY.



## Summer drinks

Our unlimited drinks packages offer a simple, inclusive way to cater for summer events of all styles and sizes. Carefully curated to suit a wide range of tastes, they combine familiar favourites with seasonal serves and considered alcohol-free options, ensuring every guest feels catered for.

The package begins with a welcoming arrival drink of house Prosecco or Pimm's, before moving into an unlimited drinks service with guests able to choose from:

- A range of bottled and canned beers, ales and cider, including alcohol-free options
- House red, white and rosé wines, alongside premium alcohol-free sparkling alternatives
- Seasonal spritzes and refreshing summer serves

Clear, generous and easy to plan, our drinks packages allow you to know exactly what you are offering your guests in advance, while enjoying a smooth and well-managed service on the day.

Packages can be tailored to suit your event, with premium upgrades, signature serves and additional extras available on request.



## Receptions

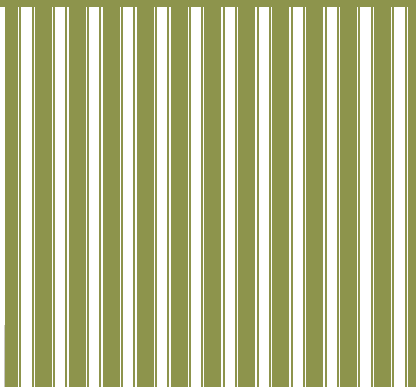
Receptions can be shaped to suit the tone of your event, from refined gatherings with background music and conversation to lively parties with dancing, a DJ or live entertainment. Internal staging can be introduced to support bands and performers, allowing the atmosphere to build naturally as the celebration unfolds.

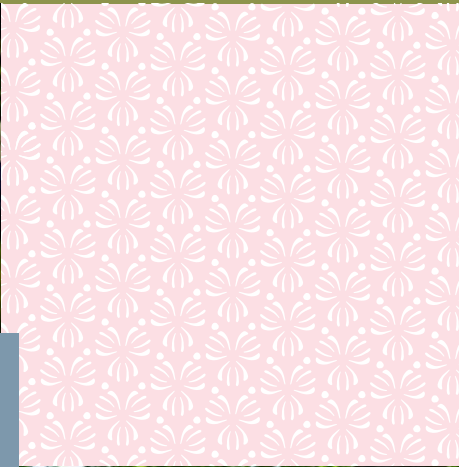
Guests can also make full use of the Garden, with optional garden games, additional outdoor furniture and defined garden zones that encourage guests to move, mingle and enjoy the space throughout the event. Together with flexible layouts, considered lighting and production options, the Pavilion offers a setting that feels polished, welcoming and distinctly your own.

## Dining

The Pavilion offers a relaxed yet refined setting for seated dining, creating an effortless inside-out experience amidst the Garden. Suitable for dinners of up to 150 guests and weekend lunches, the space feels light, open and connected to its surroundings.

With flexible layouts and the option to pair Pavilion dining with indoor spaces at weekends, events can continue seamlessly into the late evening, combining a sense of occasion with the freedom to enjoy both indoor and outdoor settings at a relaxed pace.

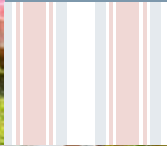




“We booked the Inner Temple Gardens for our Summer Fête family event and could not fault it. Myself, my team and all their families, had the best time.

So much so that we have already booked for next year. Highly recommend for your own events!”

ISG UK FIT OUT



## Family fun days

The Inner Temple Garden is an ideal setting for family fun days, offering a secure, gated environment. With generous open space for games and family-friendly entertainment, the Garden allows activities to be comfortably spread out throughout the day.

Mature trees and landscaped areas provide plenty of natural shade, creating a comfortable setting for guests of all ages on warm summer days. Weekend hire of the Garden or Pavilion runs between 11.00am and 9.00pm, making it well-suited to family-friendly events.

## Team building

An inspiring setting for team building days, The Inner Temple Garden offers generous outdoor space for activities, collaboration and shared experiences in a tranquil environment that supports creativity and positive teamwork.

From May until the Pavilion season begins, the Garden can be hired on its own for events of up to 300 people, offering flexibility for larger-scale team activities. Wet weather options within the main building are included as part of Garden hire, ensuring plans remain seamless whatever the conditions.

For added versatility, the Pavilion can also be hired from 4.00pm on selected dates during the Pavilion season, allowing team building events to extend naturally into a relaxed early evening gathering.

# Weddings

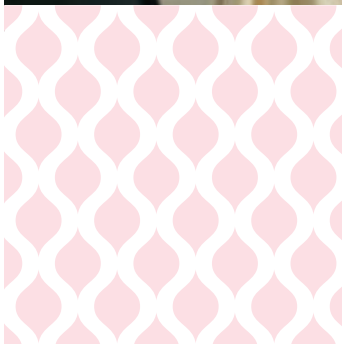
Designed to host every stage of your celebration in one place, weddings at The Inner Temple offer a seamless and relaxed experience for you and your guests. Fully licensed for wedding ceremonies across the Garden, Pavilion and main building, the setting allows the day to unfold naturally without the need to travel elsewhere.

Couples can make the most of the flexibility on offer, shaping the flow of the day between indoor and outdoor spaces. Ceremonies, dining and celebrations can be thoughtfully arranged to suit your plans, with wedding breakfasts hosted in the Pavilion and evening festivities continuing inside the main building, allowing each part of the day to feel distinct yet effortlessly connected.



“We wanted a classic, timeless and elegant wedding and the day did not disappoint. The team were calm and kind throughout, committed to providing us with the best day possible. The catering was phenomenal — every course received excellent feedback. We were fortunate to enjoy the Terrace and the suite of first-floor rooms, which worked beautifully for our reception.”

PRIVATE COUPLE



## World Cup

Selected World Cup fixtures can be shown at The Inner Temple during the Pavilion season, with AV packages available at an additional cost to support live match screenings.

Screens, sound and production can be introduced to suit the scale and style of your event, and can be incorporated into receptions, parties, family fun days and other summer gatherings. Our team will advise on the most suitable setup, ensuring the focus remains on shared viewing while maintaining the social atmosphere of the occasion.

AV PACKAGES FROM £1,025\*

\*PACKAGE PRICE EXCLUDES VAT.

## Other spaces

### THE INNER TEMPLE GARDEN

Available from May until the Pavilion is installed in mid-June, the Inner Temple Garden offers a rare outdoor setting for events of up to 300 guests. Set within a private, gated environment, it provides generous space for receptions, gatherings and summer celebrations, with the reassurance of indoor wet weather options included within the main building.

### THE INNER TEMPLE TERRACE

Located at the front of the Treasury Building, the Inner Temple Terrace accommodates up to 120 guests and is available from May to September. Ideal for pre- and post-event drinks, it connects seamlessly with the interior spaces and offers elegant views across the estate, the Gardens and towards the River Thames. An indoor alternative is available in the event of wet weather.

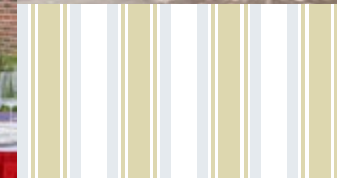
### CHURCH COURT

Set against the striking backdrop of the historic Temple Church, Church Court is available from May to September and can host events for up to 500 guests. This distinctive outdoor space brings a sense of scale and occasion to large receptions and summer gatherings. A wet-weather option within the building ensures events can proceed smoothly if required.

### PEGASUS BAR & RESTAURANT

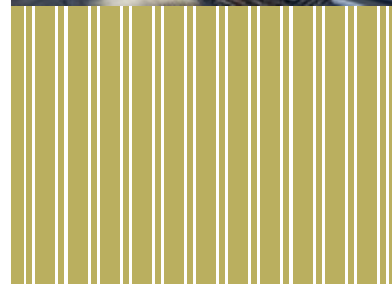
Exclusively available for private hire on Saturdays and Sundays, Pegasus Bar & Restaurant offers an inviting setting for more intimate summer gatherings, accommodating up to 50 guests standing or 25 guests seated. Its sun-trap terrace overlooking the estate creates a relaxed yet polished atmosphere, ideal for smaller celebrations.

Well-suited to christening receptions from Temple Church or nearby churches, weddings and personal occasions, Pegasus provides a charming and self-contained space for events that call for a more personal feel.



“Your team’s support and professionalism played a significant role in the success of our event. The marquee and garden set-up were fantastic. Your team’s attention to detail and assistance ensured that everything ran smoothly, and we appreciated the flexibility and responsiveness throughout the planning process.”

TABOOLA





## Entertainment packages

A range of entertainment options is available to complement your event, from live performers to interactive experiences. The following examples showcase options particularly suited to summer events, with tailored packages, additional options, and pricing available on request.

## PAVILION PARTY PACKAGE

DJ package and starlit dancefloor

## Magician

## Selfie Pod

## SUMMER FETE PACKAGE

### Three Side Stalls (Cork Shoot, Coconut Shy, Hook-a-duck)

## Roller Bowler

## High Striker

## SPORTS DAY PACKAGE

## Last One Standing

## Crazy Golf – 9 Hole

## Table Tennis

## Footpool

## ARCADE PACKAGE

## Dance Machine

## PAC-MAN Battle Royale

## Batak Lite

## Strike a Light

## WORLD CUP PACKAGE

## Footpool

## LED Table Football

## Football Arcade

## TV Screens

# Sample menus

These sample menus are designed to give a flavour of the food options available. Our dishes are created using the finest locally sourced ingredients, with a focus on seasonal produce and sustainable practices, and menus can be tailored to suit your event.

## CANAPÉS

### HOT CANAPÉS

Smoked paprika patatas bravas, saffron, aioli, bravas sauce (ve)

Charcoal Gyoza shiitake mushroom, Ssamjang mayonnaise (ve)

Lemongrass chilli prawns, Gochujang mayo

Duck gyoza, Hoisin ketchup, spring onion

Mini chicken Kiev, parsley cream cheese, red pepper ketchup (gfa)

### COLD CANAPÉS

Whipped red pepper cream cheese, asparagus, cucumber tart

Smoked salmon tartare with mascarpone on blinis

Smoked chicken Bombay on naan with chopped pistachio and mango

### DESSERT CANAPÉS

Island chocolate raspberry, pistachio and sea salt fudge

Mini yuzu meringue tart, lemon sherbet

## BOWLS

Korean BBQ fried smoked tofu, stir fried greens, steamed rice, pickled daikon (ve)

Pea and shallot ravioli, fricassee of Wye Valley asparagus, peas and broad beans (ve)

Blackened Old Bay southern-fried coley slider, sweet and sour cucumber, house slaw, lemon aioli, cream bun, sweet potato fries (gfa)

Hereford flame-grilled beef slider, maple syrup bacon, monterey jack cheddar, caramelised onions, cream bun, paprika French fries

Corn-fed popcorn chicken Caesar salad, jammy quail egg, sourdough croutons

## DESSERTS

Sicilian lemon curd blueberry compôte and Italian meringue pots (v)

Coconut panna cotta, kentish poached gooseberry and elderflower pots (ve)

## FOOD STALLS

### BERMONDSEY SMOKEHOUSE

London Smoke & Cure smoked salmon, pumpernickel, avocado wasabi and artisan caviar

### SUSHI STATION

Hand-rolled sushi, sashimi-grade tuna and salmon, traditional Japanese pickles, wasabi and soy

### IBÉRICO & CHARCUTERIE STATION

Hand-carved Jamón Ibérico, artisan charcuterie, Spanish cheeses, breads, olives, pickles and quince

### HOT CHORIZO SANDWICH STATION

Hot chorizo, buffalo mozzarella, wild rocket, piquillo peppers and garlic aioli

### CAESAR SALAD STATION (CARDINI'S)

Classic Caesar salad with heritage gem lettuce, sourdough croutons and anchovy dressing, with premium protein selections

### THE GYROS PROJECT

Chicken Gyros, oregano fries, tzatziki and fresh Mediterranean fillings, with falafel and halloumi options

### TACO STATION 'LOS TACOS'

Authentic Mexican tacos with Baja fish, Mole chicken, mushroom al ajillo and slow-cooked brisket, served with fresh salsas and crema

## Premium bar experience

Enhance your event with our premium bar experiences, offering carefully curated drinks and expert service to suit a range of occasions. From a refined Gin Bar to a refreshing Spritz Bar or a bespoke Cocktail Bar, each option is designed to complement the style and atmosphere of your event.

### GIN BAR £50\*

Maximum three cocktails per bar

Bombay Sapphire, Hendricks, Whitley Neill flavoured Gins, Chase Pink Grapefruit & Pomelo

### SPRITZ BAR £60\*

Maximum three cocktails per bar

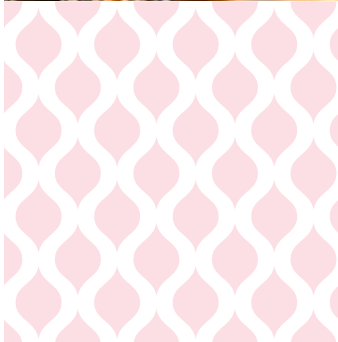
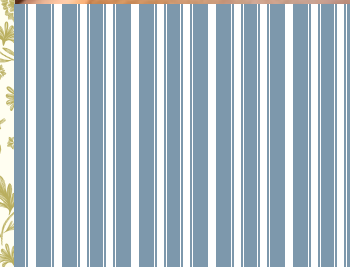
Limoncello, Aperol, Campari, Hugo, Pentire Coastal Mocktail, Limon-non-cello Mocktail

### COCKTAIL BAR £60\*

Maximum three cocktails per bar

Margarita, Lychee Love, Negroni, Pimm's, Aperol Spritz, Three-Acre Garden

\*PACKAGE PRICES ARE PER PERSON FOR A TWO-HOUR RECEPTION, EXCLUDING VAT. MINIMUM NUMBERS APPLY. BESPOKE PACKAGES AVAILABLE ON REQUEST. TERMS AND CONDITIONS APPLY.



## Bedrooms

The Inner Temple offers two elegant double bedrooms with ensuite bathrooms, conveniently located just off Fleet Street and close to Temple Church. Ideal for night-before preparations, guest accommodation or as a honeymoon suite, the rooms provide a calm and comfortable retreat in the heart of the City.

Choose between the four-poster luxury of the Chaucer Room, overlooking Hare Court, or the contemporary Boswell Room, with views towards Temple Church. Both rooms include tea and coffee-making facilities, bottled water and Molton Brown bathroom products.

BEDROOMS ARE PRICED AT £220\*

Please ask for further information.

\*PRICES ARE PER ROOM, PER NIGHT, INCLUDING VAT.

## Location

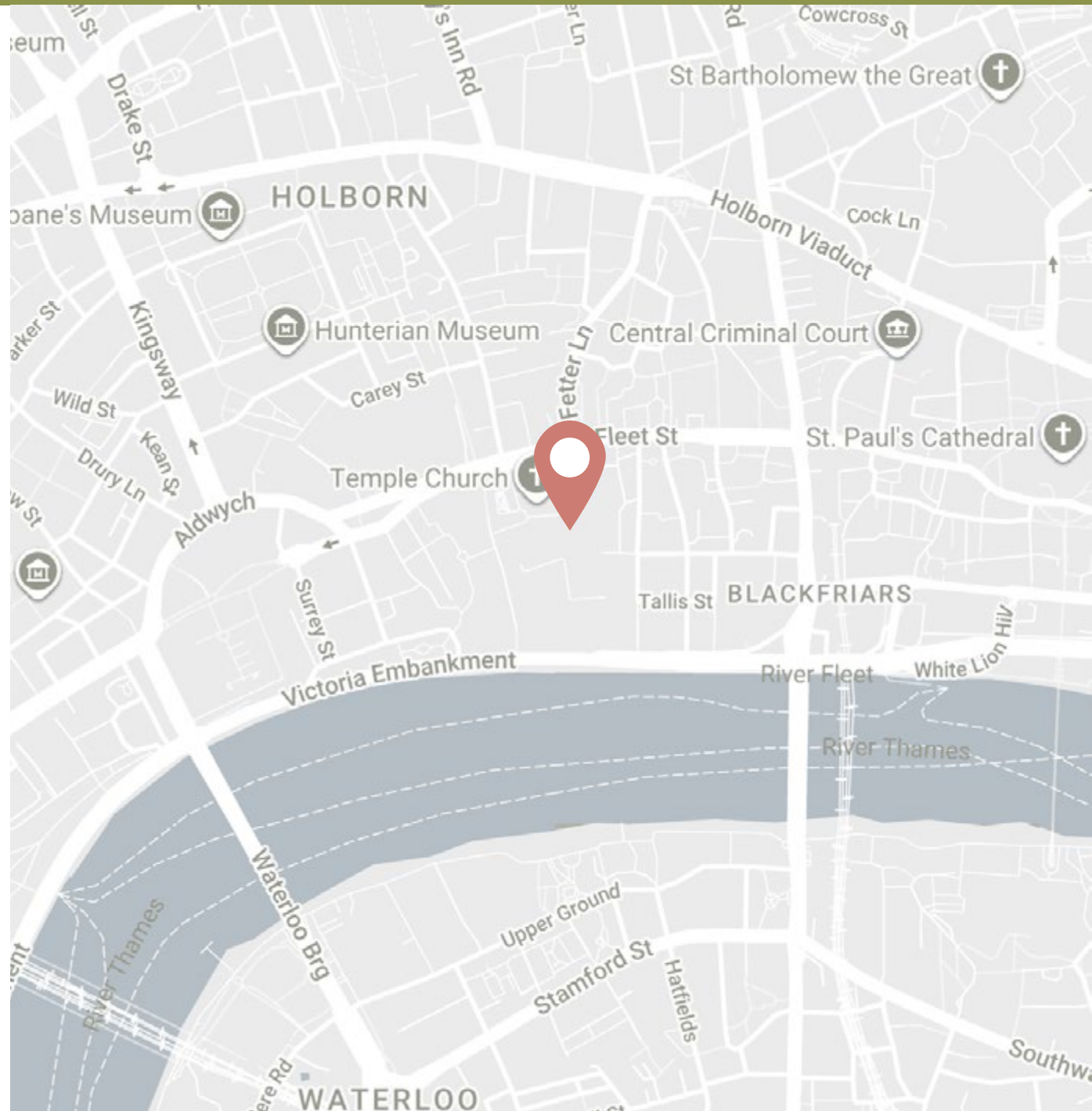
The Honourable Society of the Inner Temple  
Crown Office Row  
London  
EC4Y 7HL

### CLOSEST STATIONS (WALKING)

Temple (5 minutes)

Blackfriars (5 minutes)

City Thames Link (9 minutes)





THE HONOURABLE SOCIETY OF  
**THE INNER TEMPLE**