



**THE  
INNER  
TEMPLE**

## **A VERSATILE MEETING & EVENTS VENUE**

in the heart of London's legal quarter



## ABOUT US

The estate of The Inner Temple, one of the four Inns of Court, has been in existence since the 12th century.

The Inner Temple's distinctive position, within the Temple's Conservation Area, provides a haven of seclusion and calmness, away from the fast pace of central London, and is situated just a stone's throw from the River Thames.

In the lead up to your event, your dedicated Events Manager will work with you to ensure all details are thoroughly planned.

With a passionate team and extensive experience, we are committed to making your vision a reality.

# THE HALL

The grandest of the rooms and steeped in history.

Upon entry, guests are immediately struck by its majestic high ceilings, oak-panelled walls adorned with historical shields and paintings, and sparkling chandeliers. It provides a breathtaking setting that is perfect for a variety of events, from drinks and dinners to wedding ceremonies and even an impressive conference space. With its timeless allure and remarkable features, the Hall guarantees to leave a lasting impression on all those who enter.

The Hall is available for hire on evenings and weekends.

## Dimensions

281.7 sq.m

(L) 23.154m (W) 12.167m (H) 10.5m

## Room Capacities



RECEPTION  
400



DINING ON STRAIGHT TABLES  
276



THEATRE STYLE  
270 (lecture)  
230 (with reception)



# PARLIAMENT CHAMBER

Features fine oak panelling, Grinling Gibbons carving above the fireplace and rich embroidered curtains.

Situated on the first floor, the Parliament Chamber is an ideal room for hosting a range of events such as a cocktail reception, wedding ceremony, banqueting, or a conference.

With its stunning vistas of the garden and a grand piano, this room exudes a lavish and classic ambiance.

## Dimensions

137.2 sq.m

(L) 16.74m (W) 8.194m (H) 3.679m

## Room Capacities



RECEPTION  
200



DINING ON  
STRAIGHT TABLES  
80



THEATRE STYLE  
154 (lecture)  
100 (with reception)



BOARDROOM  
40



HORSESHOE  
70



# LUNCHEON ROOM

A bright and airy room with a picturesque view of the garden.

This versatile space can be utilised independently or in conjunction with the adjoining Parliament Chamber as a drinks reception or catering area for conferences.

The room is also an ideal location for intimate private dinners and has a license for civil ceremonies. Its decor includes charming chandeliers, a grandfather clock, a grand ornate fireplace and stunning paintings of the estate and garden, adding a touch of elegance to any occasion.

## Dimensions

91.28 sq.m

(L) 12.141m (W) 7.518m (H) 3.727m

## Room Capacities



RECEPTION  
120



DINING ON  
STRAIGHT TABLES  
62



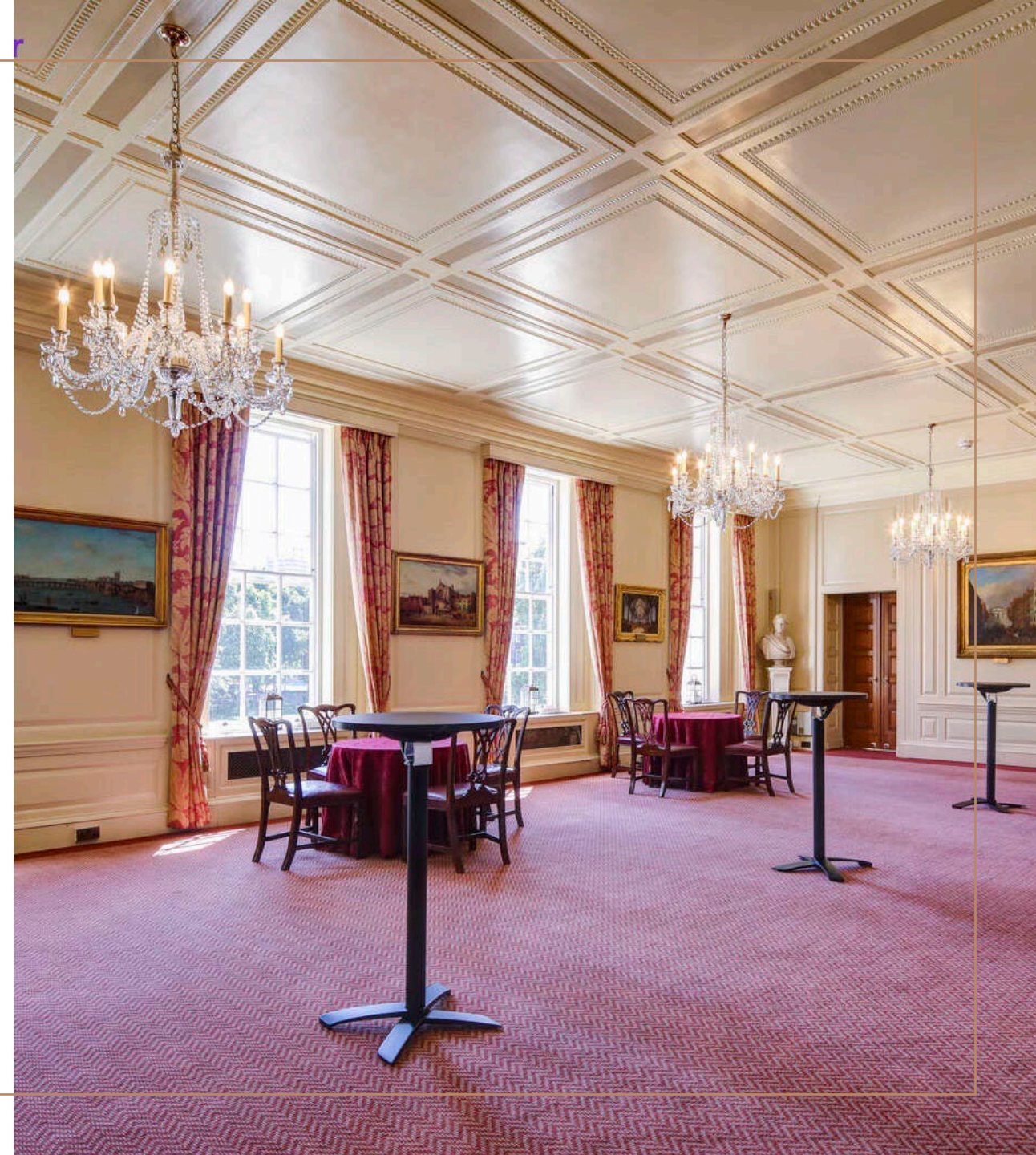
THEATRE STYLE  
70 (lecture)  
50 (with reception)



BOARDROOM  
30



HORSESHOE  
50



# DRAWING ROOM

A versatile space located on the first floor, with plush furnishings perfect for hosting either a sophisticated reception or an intimate dinner.

This room is filled with natural daylight, making it a delightful choice for events. In the evening, the room exudes a warm and welcoming atmosphere that can be enhanced with dimmed lighting.

The Drawing Room is available for hire midweek, mornings and evenings and weekends.

## Dimensions

88.59 sq.m

(L) 12.164m (W) 7.783m (H) 3.724m

## Room Capacities



RECEPTION  
60



DINING ON  
STRAIGHT TABLES  
50



THEATRE STYLE  
45 (lecture)  
30 (with reception)



BOARDROOM  
30



HORSESHOE  
56



“The Inner Temple is a fantastic venue to hold an event at. The facilities are superb and the staff and catering are excellent. Nothing is too much trouble. I highly recommend the Inn as a venue for events.”

Tom Cosgrove KC, Vice-Chair of PEBA



# LECTURE THEATRE

A self-contained space on the 3rd floor for up to 120 delegates.

Primarily used for lectures, conferences, and seminars, it is equipped with amenities that cater to attendees' comfort and convenience.

The chairs each feature armrests, inbuilt USB ports, and individual comfort cooling. The room is thoughtfully designed with a slight incline, providing a clear view of the stage while maintaining an intimate atmosphere.

Boasting advanced audiovisual technology, including an integrated projector screen, video conferencing cameras, and an audio system, the room ensures a seamless and enjoyable experience for all attendees.

## Room Capacities



THEATRE STYLE  
120





# RECEPTION SPACE

A private reception space adjacent to the Lecture Theatre.

Designed in a contemporary style, this space is ideal for breaks, lunches, and drinks receptions.

It offers a modern and inviting atmosphere. There is a bar where catering can be elegantly displayed.

Additionally, poseur tables are strategically placed throughout the area, providing a convenient spot for guests to rest their drinks.

For the convenience of attendees, a charging station is also available, allowing them to recharge their phones or laptops.

## Room Capacities



RECEPTION  
120



# MEETING ROOMS AND RECEPTION SPACE

The 4th floor comprises of 8 multi-function meeting rooms and a shared breakout space.

Perfect for small meetings, dinners or exclusively hired for larger events. From the breakout space, there is access to a viewing balcony which overlooks The Inner Temple's award-winning gardens and its surrounding areas.

Artworks that represent the Inn and its history adorn the walls and the spaces are flooded with natural daylight. Cloakroom facilities are available with exclusive hire of the 4<sup>th</sup> floor.

## Room Capacities



### THEATRE STYLE

Rooms 1, 2, 3 & 4: 26  
Rooms 6, 7 & 8: 12  
Rooms 1 & 2 combined: 60  
Rooms 3 & 4 combined: 62



### RECEPTION

Rooms 1 & 2 combined: 60  
Rooms 3 & 4 combined: 60



### BOARDROOM/DINING STYLE

Rooms 1, 2, 6, 7 & 8: 12  
Room 5: 10  
Rooms 1 & 2 combined: 28  
Rooms 3 & 4 combined: 30



# AUDIO VISUAL

The audio-visual systems built into our rooms are complimentary with room hire. If you have any additional AV requirements beyond our standard offerings, we are more than happy to accommodate them.

## 1<sup>st</sup> floor

Built-in PA system and 1 microphone included in each room.

## 3<sup>rd</sup> floor

Integrated screen, audio system with wireless microphones, and video conferencing cameras included in the Lecture Theatre.

## 4<sup>th</sup> floor

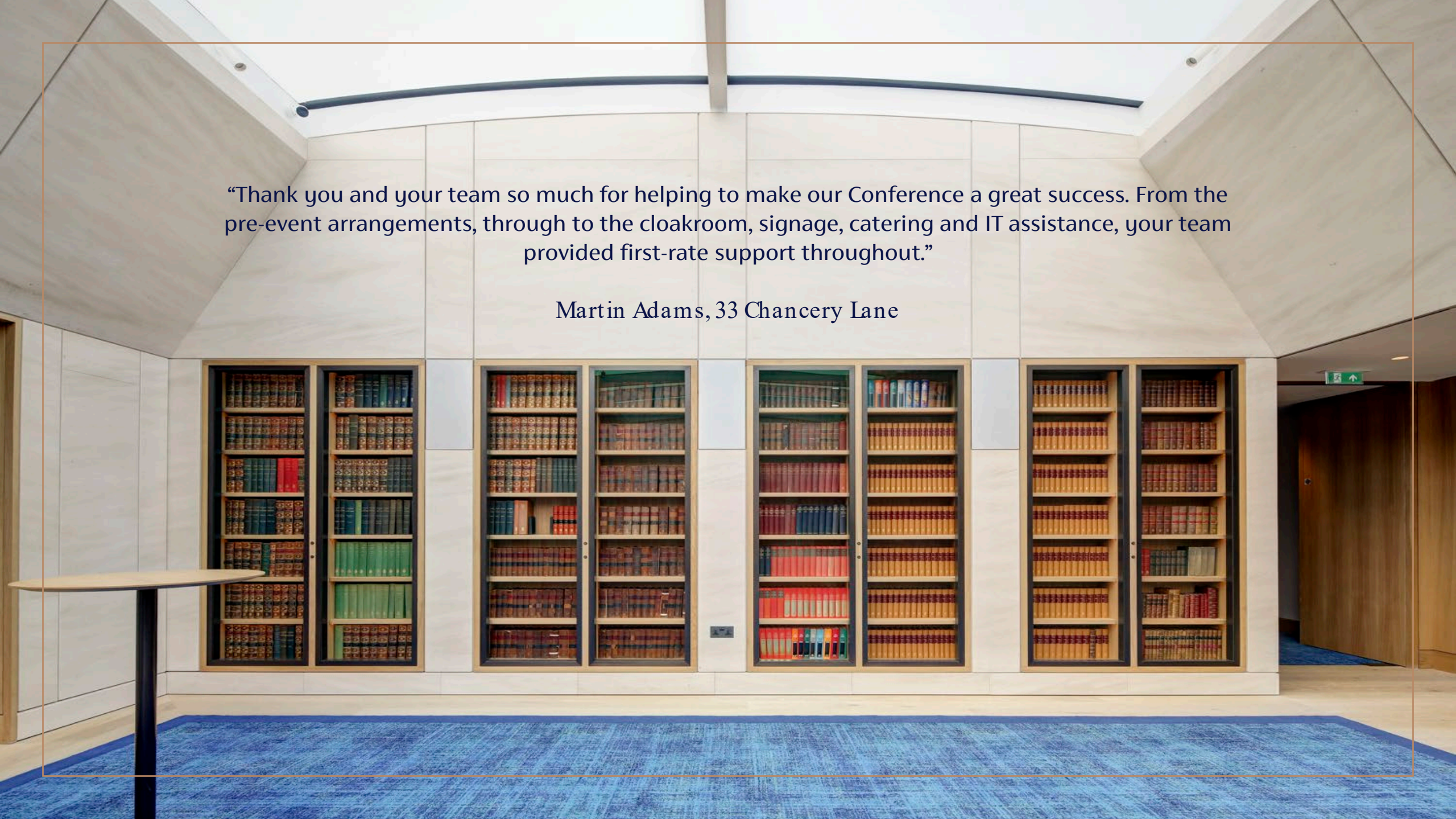
Integrated screen, ceiling microphone, and video conferencing camera included in each room.

A roaming technician is available for all rooms from 9.00am – 5.30pm to assist with set up and any issues during the day. A dedicated technician can be quoted on request.



“Thank you and your team so much for helping to make our Conference a great success. From the pre-event arrangements, through to the cloakroom, signage, catering and IT assistance, your team provided first-rate support throughout.”

Martin Adams, 33 Chancery Lane



# OUTSIDE SPACES

## The Garden

The Garden is a wonderful location to host an event from May to July. With its three-acre expanse including a manicured lawn, it offers plenty of room for guests to mingle and enjoy the beautiful surroundings. The garden is set back from the Thames which adds an extra element of tranquility and privacy. The seasonal flowers also provide a stunning natural backdrop for photos.

## The Marquee

From the 17 June to the 10 July 2025, a marquee will be set out in the Garden. Whether you're hosting a corporate reception, a wedding reception, or any other type of event, the Garden and Marquee provides a unique and picturesque setting that is sure to impress your guests.

## Capacities



GARDEN RECEPTION  
300



MARQUEE AND GARDEN RECEPTION  
600



MARQUEE DINING ON  
STRAIGHT TABLES  
185



# OUTSIDE SPACES

## The Terrace

If you are looking for a stunning outdoor area to host a drinks reception, the Terrace is just the place.

Available for hire from May to September, the Terrace provides a spacious and elegant setting for guests to mingle and enjoy the beautiful surroundings.

## Church Court

The Church Court is steeped in history and tradition. It's quiet and secluded location provides a welcome respite from the hustle and bustle of the city with ample room for guests to mingle and socialise.

The 12th Century Temple Church provides a unique and unforgettable backdrop for a corporate gathering or wedding reception.

## Capacities



TERRACE RECEPTION  
200



CHURCH COURTYARD RECEPTION  
500





“We booked the Inner Temple Gardens for our Summer Fête family event and could not fault it. Myself, my teams and all of their families had the best time. So much so, that we have already booked for next year. Highly recommend for your own events!”

Beckie Young, ISG UK Fit Out

# PEGASUS BAR & RESAURANT

With a contemporary look and a south facing terrace, it is the perfect space for small gatherings such as christenings, engagement parties and family celebrations.

Available for private hire on the weekends anytime between 11.00am-11.00pm.

The bar features elegant gold wine display units, comfortable tub chairs, booth seating, and jewel-toned scatter cushions. Drum pendant lights adorn the ceiling. The terrace offers outdoor seating with large umbrellas, and views of the estate.

Choose between afternoon tea, finger food, or a seated dinner for a casual or formal event.

## Capacities

RECEPTION  
50

DINING ON STRAIGHT TABLES  
28





“I cannot express how invaluable it was to have such a reliable, efficient and accommodating team on hand. The service your Events, Logistics, Tech and Catering teams offer is truly impeccable. The Inner Temple has undoubtedly set the standard. No detail was overlooked, and the results were seamless.”

Lor'elle Mitchell, 12 KBW



# BEDROOMS

The Inner Temple has two double bedrooms with ensuite bathrooms, which are conveniently situated just off Fleet Street near the Temple Church. They are the perfect spot for event organisers or guests. Please enquire for availability and prices.

## **Boswell Room**

Finished in a contemporary style, the Boswell Room overlooks the famous Temple Church.

## **Chaucer Room**

Overlooking Hare Court, the Chaucer Room is divinely comfortable, with a four-poster bed and a faux fireplace being the central focus of the room.



# WHERE TO FIND US

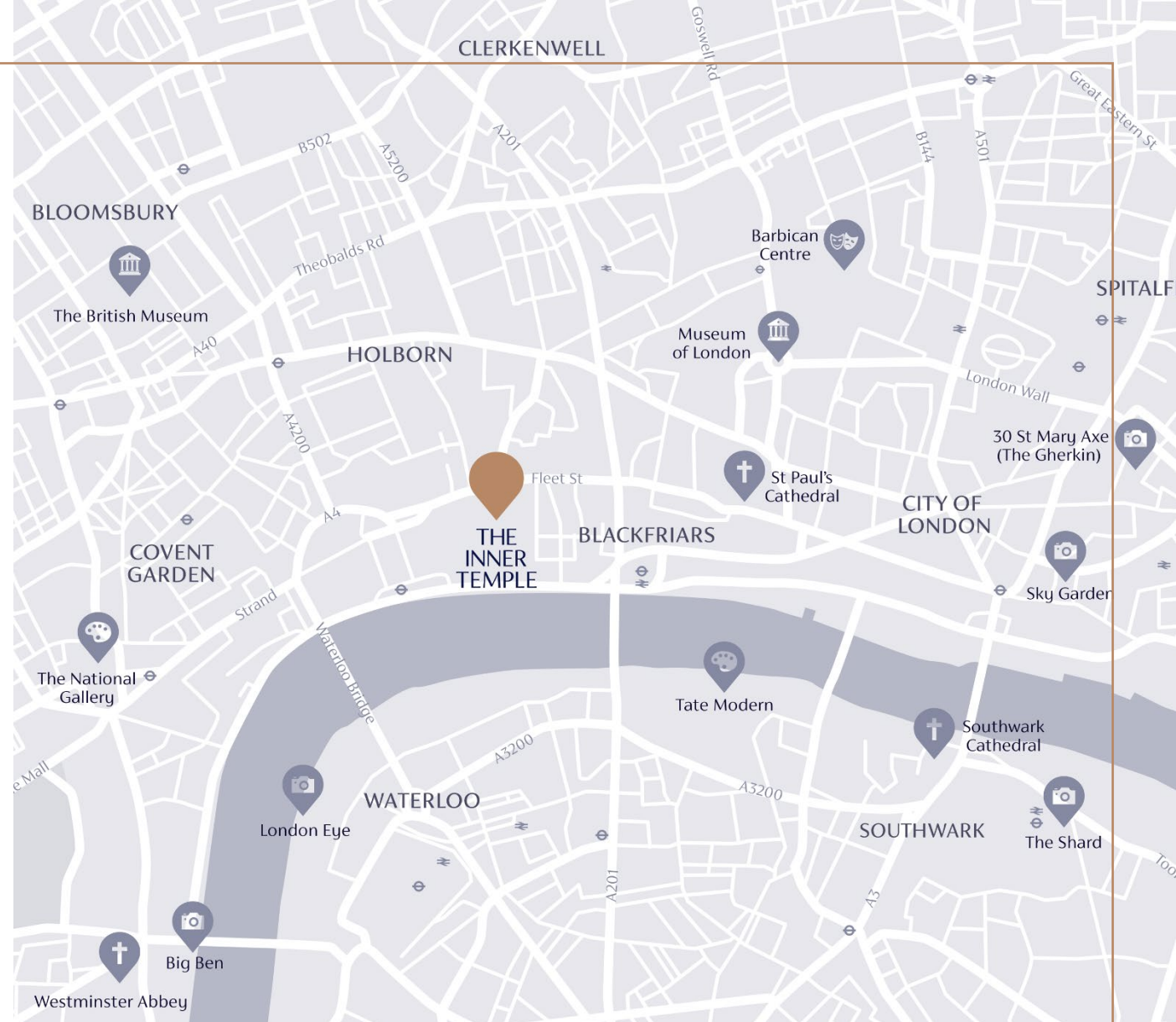
The Honourable Society of the Inner Temple  
Crown Office Row  
London

EC4Y 7HL

[innertemplevenuehire.co.uk](http://innertemplevenuehire.co.uk)  
[venuehire@innertemple.org.uk](mailto:venuehire@innertemple.org.uk)

020 7797 8230

 [@innertemplevenue](https://www.instagram.com/innertemplevenue)



MEETINGS | CONFERENCES | PRIVATE DINING | RECEPTIONS | WEDDINGS